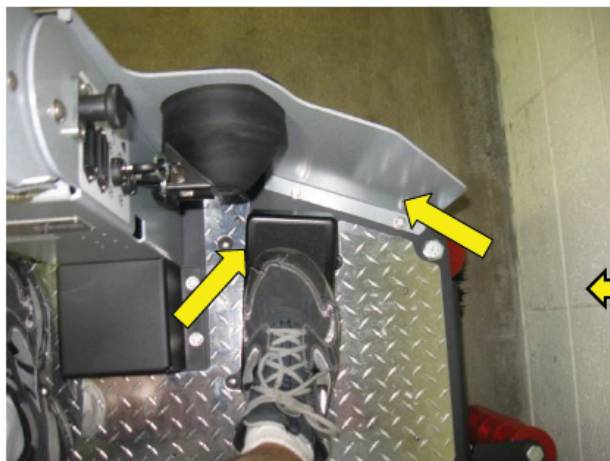


# XR



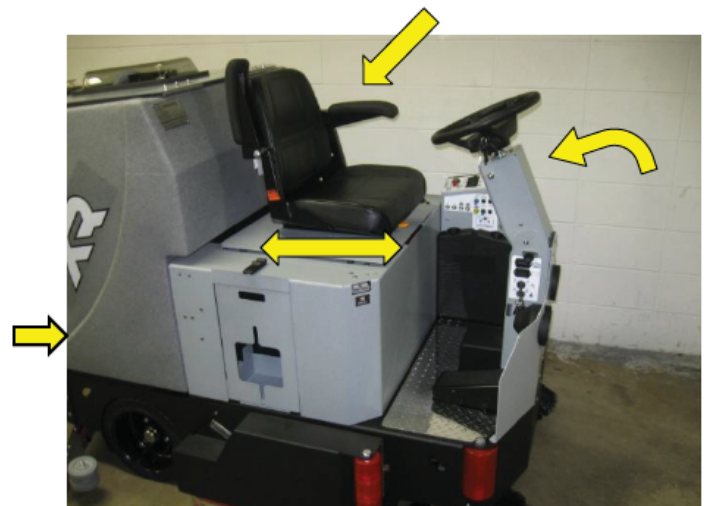
The XR scrubber uses larger (8" stainless) hinges and bolt directly into the heavy gage steel frame. This provides better durability than other machines that use smaller tank hinges bolted to plastic tanks.

The XR scrubber's 2" recovery drain and hose are larger than those on many other machines, making the XR scrubber less likely to clog.



The XR scrubber has a simple and large pedal, which controls speed. This view also shows the protection offered to the Operator's foot on the XR scrubber. A complete apron across the front makes it harder for the operator to hang his foot off the side, reducing operator injuries.

The adjustable position of the steering wheel makes the XR scrubber more ergonomic than some other machines. The high seat back and adjustable seat with armrests are standard.



# XR



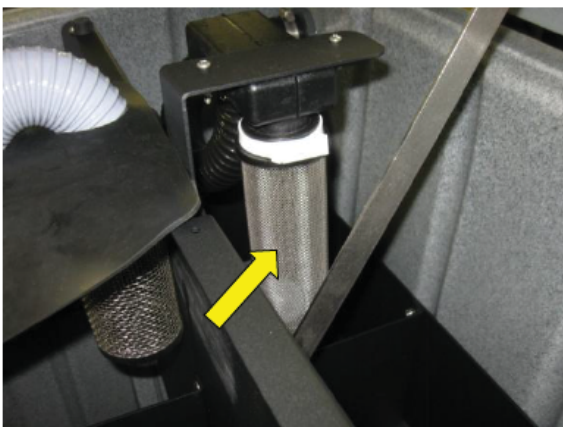
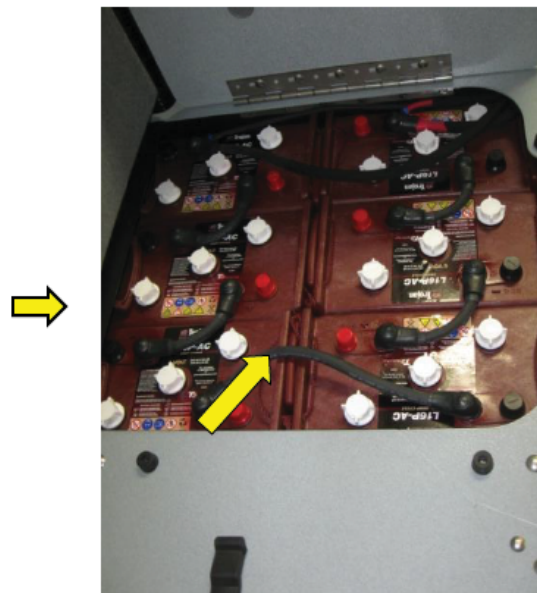
The heavy duty wide steel frame of the XR scrubber offers stability without the need for tip-over bars used on some other machines.

The XR scrubber is built to scrub on either side, and with roller bolted to the steel frame.



The XR scrubber has a heavy duty steel frame – not plastic like some other machines – for durability and protection.

The XR scrubber is a 36 volt machine with a steel case and high quality “Trojan” brand industrial batteries and therefore can offer longer run time than machines with smaller amp hour batteries.



The XR scrubber uses a stainless steel vacuum screen, which can be cleaned and used for years. Not like the disposable screens on other machines, saving the customer money.



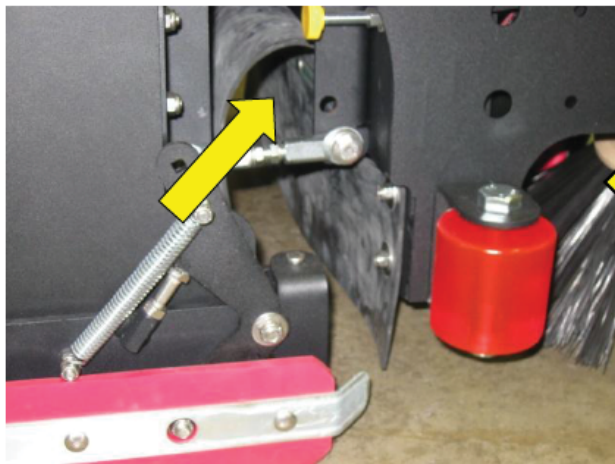
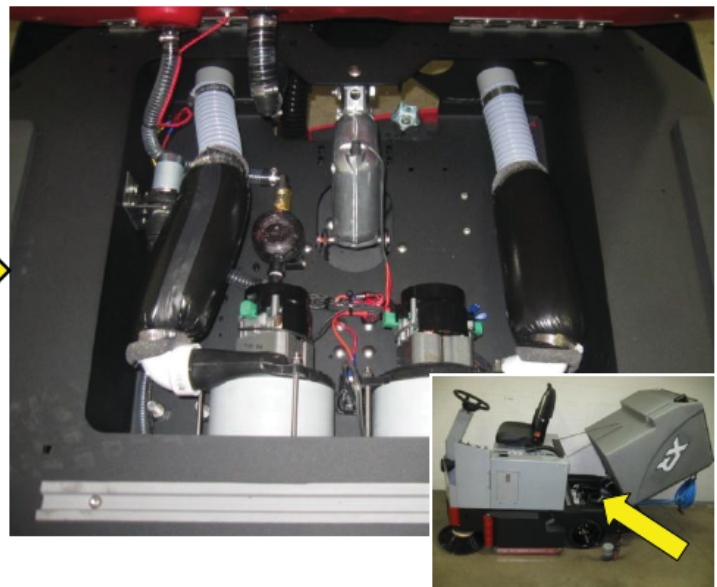


The XR scrubber routes the wires straight up and out of harms way.



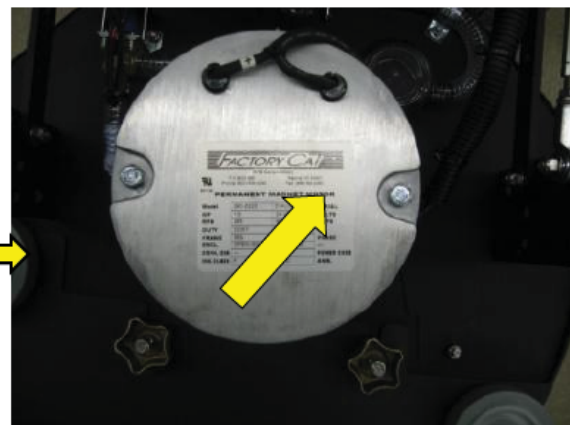
The XR scrubber uses durable, heavy-duty steel trailing arms and scrub deck, which are better able to withstand collisions and be repaired in the field than machines with plastic trailing arms and cast aluminum scrub decks.

The XR scrubber mounts its solution valves in the Top Side Service, axle mount. This keeps the solution valves cleaner and free of debris than solution valves mounted on the scrub deck.



Unlike many other machines, the XR scrubber has a barrier to stop water or debris from being thrown onto the scrub deck.

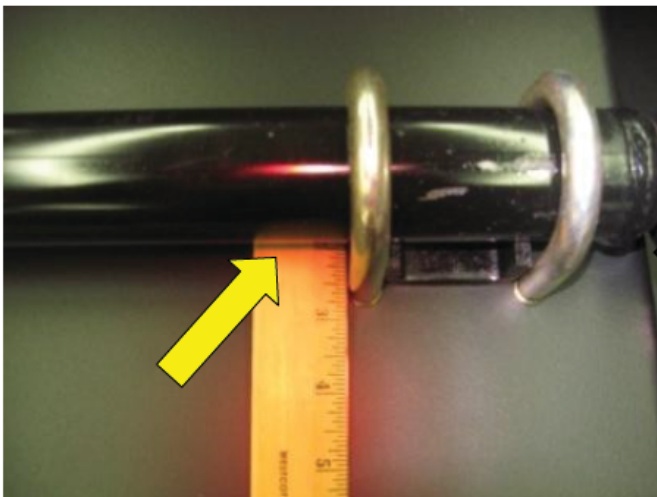
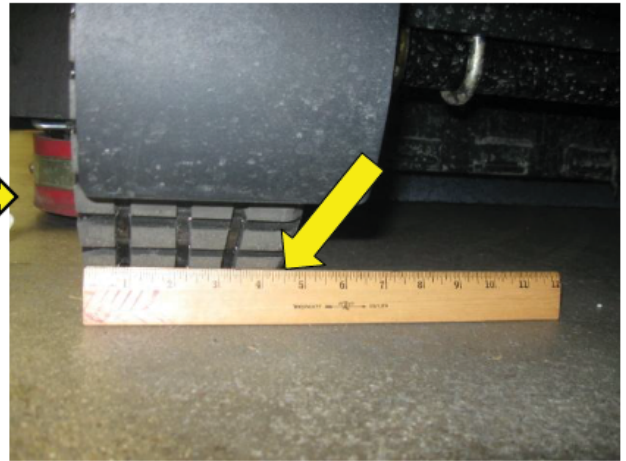
Our motors are made in USA not sourced from overseas, we invest more but we find its worth it as our motors have a longer lifespan of other competitor machines.





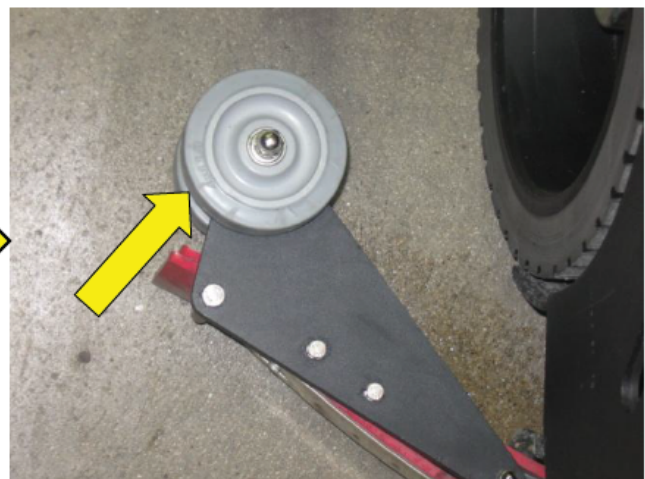
XR scrubber's have a 14" diameter tire. The larger diameter improves the ride over expansion joints and irregular concrete surfaces. Each tire is rated at 3,100 lbs, which is 3 times greater than the load with full tanks..

Our XR scrubber 4.5" rear tires are wider than tires on many other machines. The additional width increase traction and stability. The XR scrubber also offers a softer footprint (lower psi) than machines with smaller tires and is friendly to sensitive ceramic tile edges.

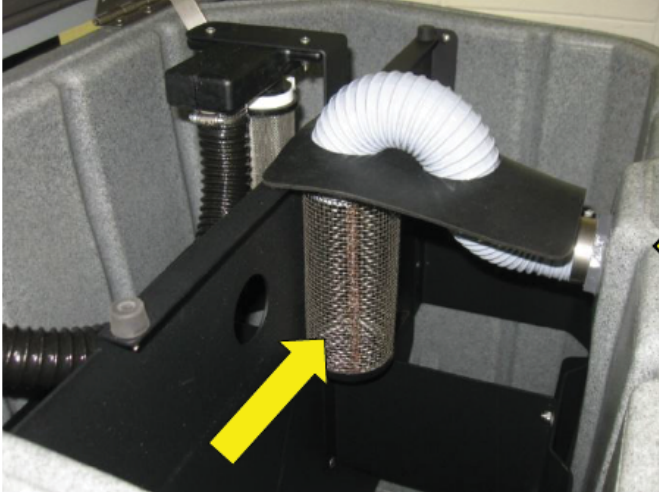


The XR scrubber 2" axle is larger than axles on many other machines. The larger axle is designed to support the XR scrubber in harsh applications and last the life of the machine.

XR scrubber uses a heavy duty "solid" wheel, which is unable to break from collisions with objects and has soft rubber edges to avoid marking walls.





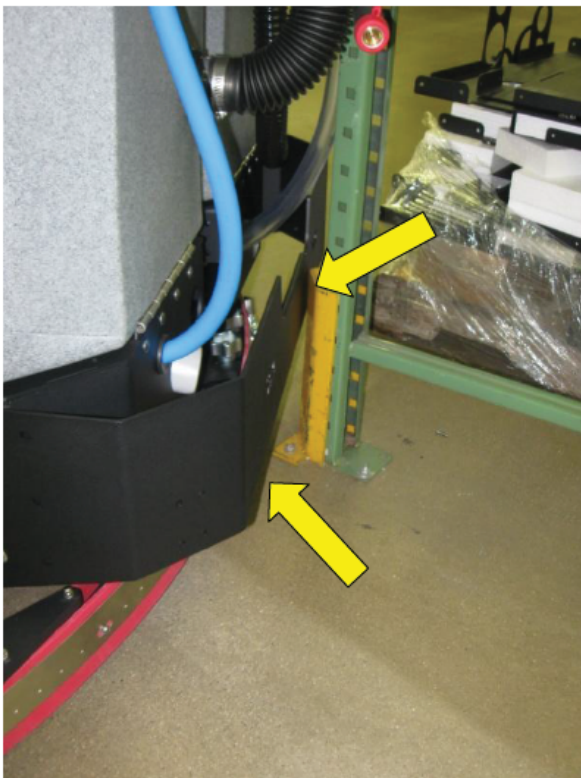


A feature to our XR scrubber is the "Drain Saver" stainless steel basket that collects litter from recovery water. This reduces the potential of discharge water clogging the customers' floor drains. A simple device that can avoid costly drain repairs for customers.

Tie down points allow for easy transportation, and are part of the heavy duty steel frame on the XR scrubber. Most "commercial" scrubbers in this category are primarily plastic, which are more suitable for hospitals or schools.



Our XR scrubber comes standard with a heavy-duty steel rear bumper, which helps protect the squeegees in "reverse" collisions. All scrubbers offer "breakaway" squeegees for "forward" collisions.





Our 1 3/4" brush fibers are longer than those found on many other machines, which means that our brushes last longer than shorter length brushes used on machines in comparable conditions.



Our disc brushes are actually the size that you ask for, so when you ask for a 34" disc deck, you get two 17" disc brushes from us. Our 4.5" brush width gives more scrubbing area than many other machines on the market.

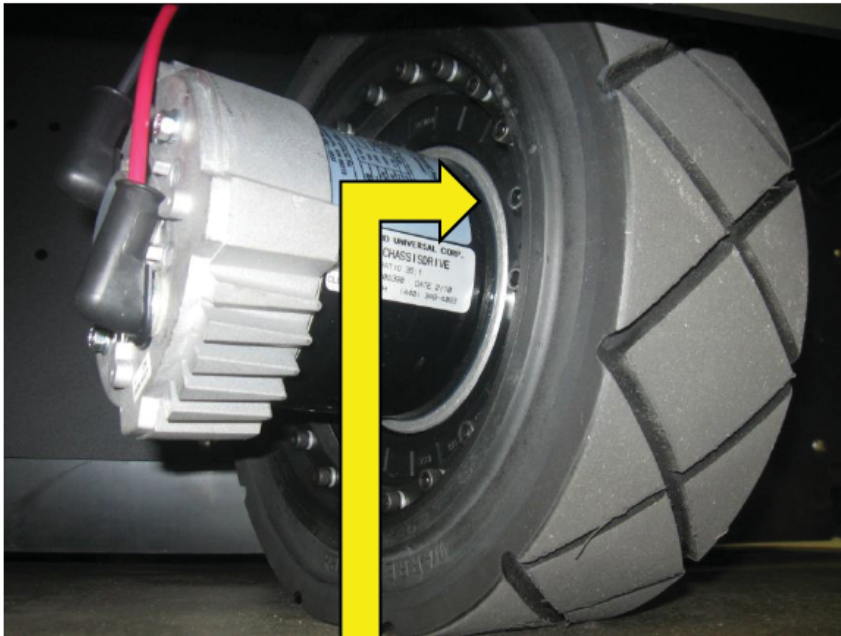
Our electronically-controlled scrubbers use an electronically-generated pulse to carefully control water flow. Our machines can be equipped with an optional ECON switch that, when activated, reduces battery power consumption for vacuum, brushes and traction drive, and also reduces water consumption. Which all add up to a greener machine for the environment. Which all adds up to a more environmentally efficient machine.







Our machines are made right here in America. Built with the highest standards in mind.



The components on the left side are from the Front Wheel "Chassisdrive" used on the XR. This drive is built in the Mid-West of the USA and with much stronger components. The stars point out the difference between our drive and the cheaper import (Asia and Europe) that is used on some competitors. The major difference being the size and therefore the strength.

Two major advantages to our drive are that both the drive motor and tire can be service independently of the rest of the assembly. This is not the case on the cheaper imported drives, as the motor is contained inside the tire, and requires complete disassembly.



## Alternative Gears

# XR

## Popular Options



Side Doors are heavy gage, powder painted steel doors, which hinge open to access the scrub deck. These HD doors mount with a stainless hinge, to the rider scrubber's steel frame, and protect the scrub deck from collisions into poles, pallets and such. The doors include tall tower rollers, with non-marking polyurethane rollers, which spread impacts better and are less likely to damage or mark drywall.

Managers' Lock-Out Brush Pressure allows a Manager, with a private key, to lock out the scrubber's Scrub pressure adjustment. Our scrubbers offer 5 down pressure settings, and should only be used on maximum settings for floors with heavy soil build up or stripping floor finish. To avoid unnecessary wear on brushes or brushes, this lockout can be employed to maintain Managements' preferred settings.

Manager's Lock-Out Solution Control permits a Manager, with a private key, to lock out the scrubber's Solution Flow adjustment. Our floor scrubbers offer 6 settings for solution flow (Off, 0.2 gpm, 0.4 gpm, 0.6 gpm, 0.8 gpm, 1.0 gpm), with Heavy flow only needed for thick soil, dusty applications or times when cleaning at a higher transport speed. To limit the waste of water, the solution setting can be locked.



On-Board Soap System (SUDS). This Super-concentrated Universal Dispensing System automatically and precisely meters the soap into the solution stream, thus avoiding spills, misuse of chemicals, unauthorized dilution adjustments, etc. By blending the scrubber soap at the end of the solution stream, only fresh water is used to fill the tank, or run through the solution system's filter and solenoid valve, reducing potential clogs with these items. The SUDS jugs include cap inserts with valves to protect operators from exposure, a big safety feature of traditional drums and pales of soap. The system allows the operator to run with it OFF, Normal or Double Dose. The option includes a box of (Qty: 2) 2.5 gallon jugs of PowerCat detergent to get the customer started.



# XR

## Popular Options



Spray Jet option equips the scrubber with a heavy duty hose 4' - 10' and spray nozzle. This allows the operator to use the scrubber's clean solution under pressure (3.0 gpm / 45 psi) to flush out the recovery tank when draining the tank when fresh water source is not within reach. Operator can also cleanout the scrub deck/hopper, pre-spray a large floor area for better detergent dwell time, cleaning under racks, around equipment, into restrooms and more.

Vacuum Wand extends the reach of the scrubber's vacuum system. The option includes a steel wand and vacuum shoe, and a 12' flexible hose to connect to the recovery tank. It permits the operator to recover spills under racking, behind cabinets or cleaning restroom floors.



ECON- Energy Saver Switch allows the scrubber operator to choose between standard performance range (maximum) or "reduced" performance range and thus conserve energy and extend the runtime. Intended to be one of many environmentally conservative measures we're taking to reduce energy use.