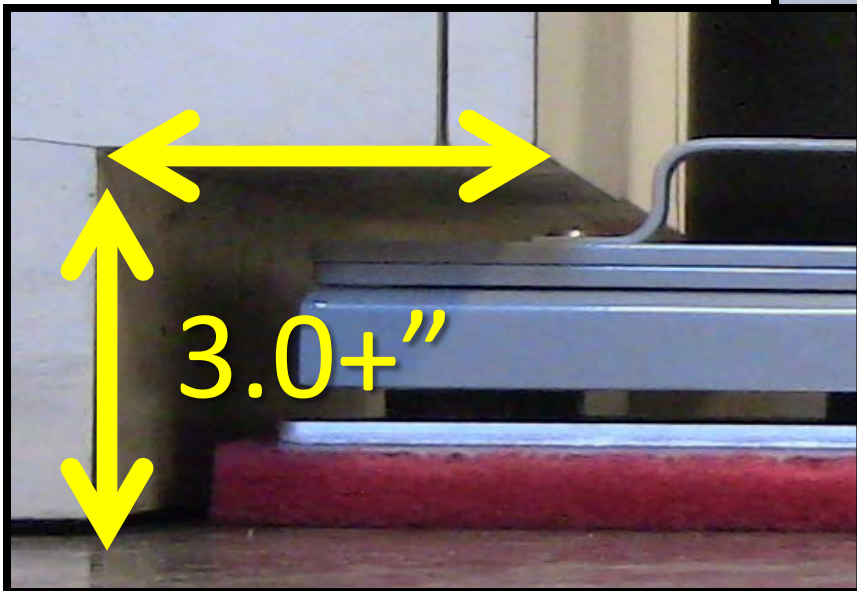
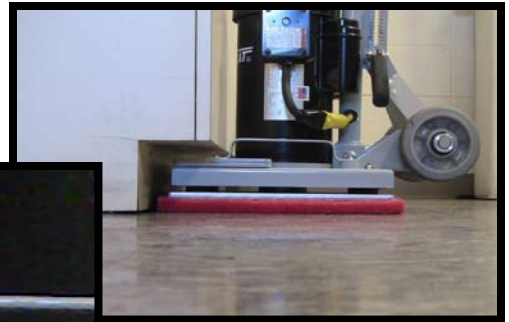
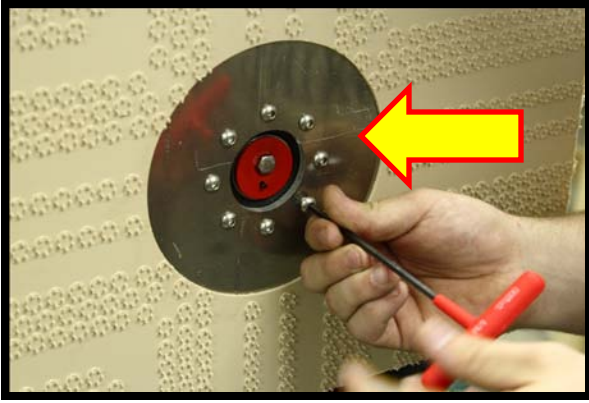




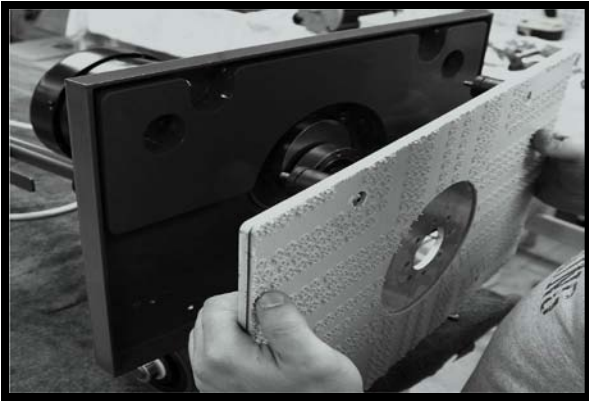
Unlike old fashioned rotary machines, the unique rectangular head cleans into corners.



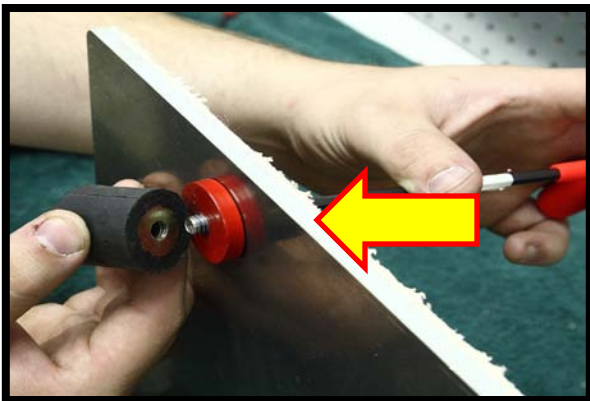
Unique motor design is Made in the USA, and narrow. Allowing the machine to work under overhangs and counters.



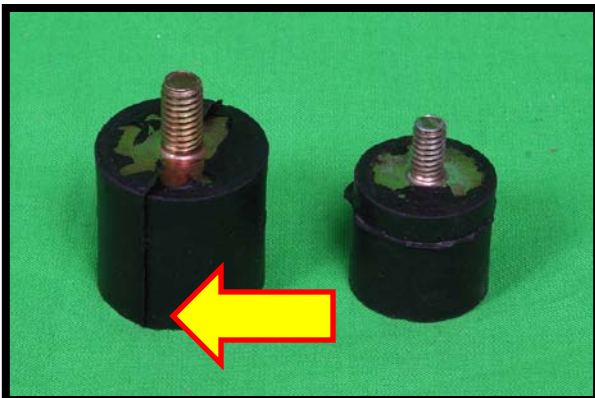
Stainless Fasteners Attach the solid (*not cast or plastic*) Aluminum Deck



Aluminum deck easily removes for service or maintenance



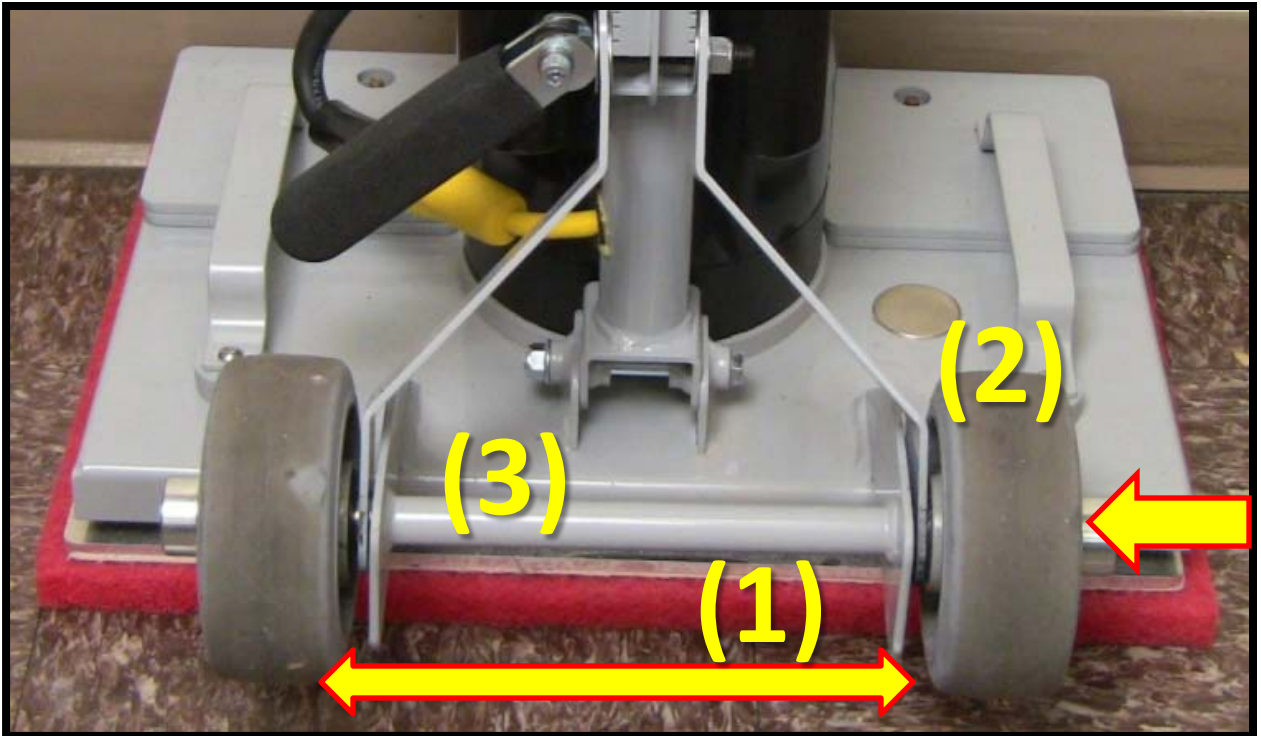
Through bolts into isolators



EDGE uses larger Isolators, which do the hard work on the machine. 1" diameter wide with 5/16" bolts. Shown next to alternative.



Welded cord wrap is heavy duty, where some others use cheap pop rivets to attach. Heavy duty construction for years of service



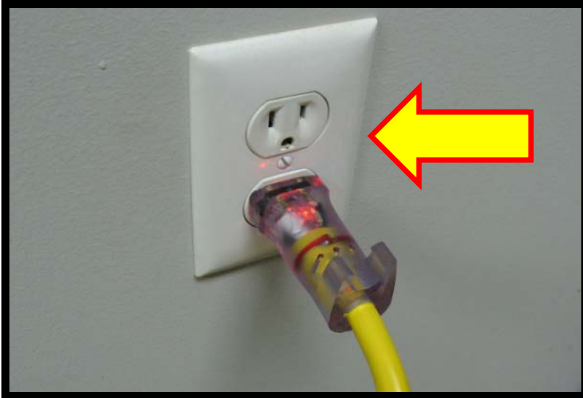
1. Wider Stance = stability
2. Wide Tires with Roller Bearings for easy transport
3. $\frac{3}{4}$ " thick axle is 50% stronger than $\frac{1}{2}$ " on others



EDGE has a “stamped” aluminum serial plate, instead of a cheap sticker.



EDGE uses high quality, American Made Motor.



Hospital grade lighted plug and quality cord for reliable use at a distance.



Dust Control System available.



Wide Variety of:

- Pads
- Sanding Screens
- Sand Paper
- Tile / Grout Brush
- Concrete Abrader Plate
- Carpet Bonnet